



# Hooley Lane, Redhill

£1,750 Per Month







This luxury flat is in a great location, just opposite a green space and only a short walk from Redhill's town centre, and both Earlswood and Redhill train stations.





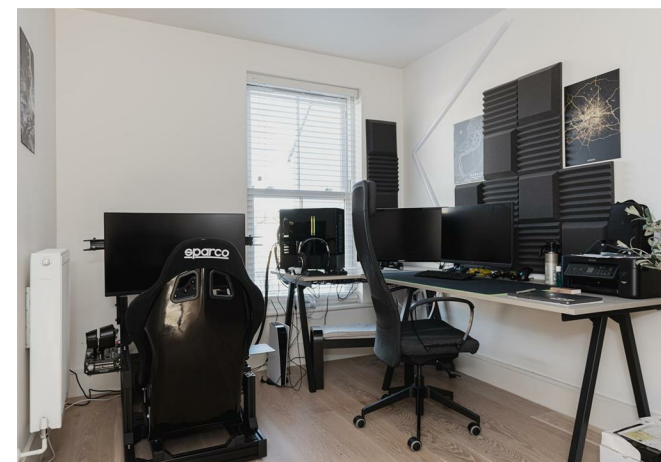
Ralph James is proud to present this modern two bedroom flat. The apartment has been finished to a high standard throughout and offers a spacious living area with an open plan high-end fitted kitchen. The living area has a three floor to ceiling windows, flooding the space with natural light and overlooks the common.

The kitchen includes integrated appliances, including fridge freezer, washing machine, full-size dishwasher, oven, hob and extractor. Stunning work surfaces include a breakfast bar with seating area and lighting above.

Both the master and second bedroom feature built-in wardrobes, contemporary crystal lighting and full-high windows offer a bright aspect. The modern, luxury shower room has wall and floor tiling and a large rainfall shower head.

The flooring throughout is a light oakwood flooring and wall windows are housed in white Venetian blinds.

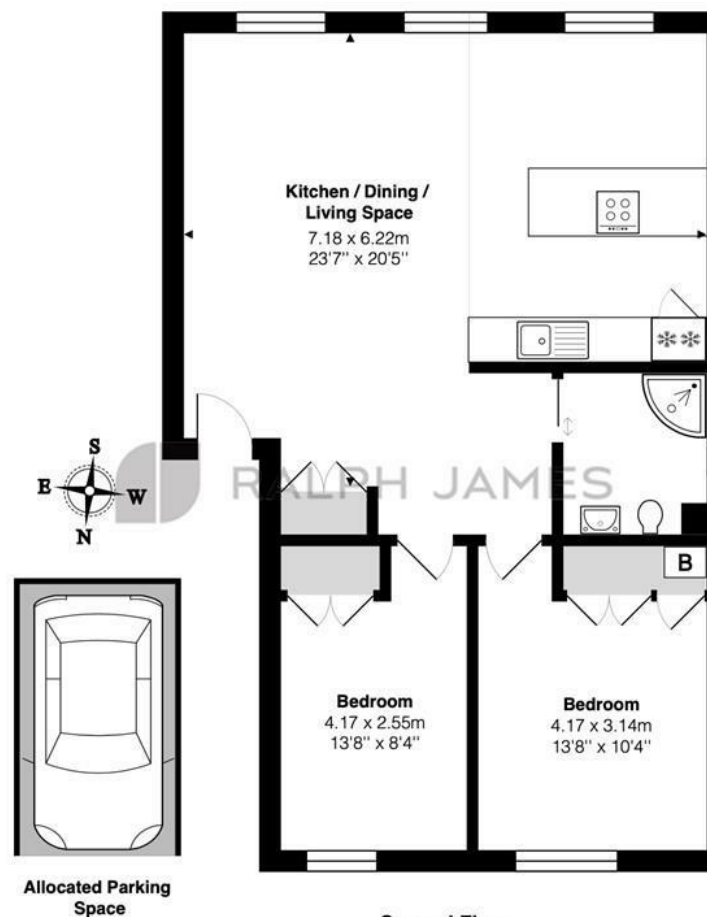
Allocated parking is available.





## Need to know

- Modern two-bedroom flat presented
- High standard finish throughout the apartment
- Spacious living area with an open-plan high-end fitted kitchen
- This property is available part-furnished
- Three floor-to-ceiling windows in the living area, providing ample natural light and overlooking the common
- Principle and second bedrooms feature built-in wardrobes, contemporary crystal lighting, and full-height windows
- Light oakwood flooring throughout, complemented by white Venetian blinds on wall windows
- Luxury shower room with wall and floor tiling and a large rainfall shower head
- EPC: B
- Council Tax: D



Artillery Court, Hooley Lane, Redhill

Total Area: 73.0 m<sup>2</sup> ... 786 ft<sup>2</sup> (excluding allocated parking space)

FOR ILLUSTRATIVE PURPOSES ONLY.

Whilst every attempt has been made to ensure the accuracy of the floor plan shown, all measurements, positioning, fixtures, features, fittings and any other data shown are an approximate interpretation for illustrative purposes only and are not to scale.

No responsibility is taken for any error, omission, miss-statement or use of data shown.

The above statement applies to both 'Still Moving London LTD' and the Company or individual displaying this floor plan.

Unauthorised reproduction prohibited.

Â© Still Moving London LTD (www.stillmoving.london)

 RALPH JAMES

## Interested?

redhill@ralphjames.co.uk  
01737 765 555

1

ralphjames.co.uk